

# ALS SOCIETY OF BC EQUIPMENT LOAN PROGRAM

## Table of contents

<a href="#"><u>Hospital Beds</u></a>	2
<a href="#"><u>Hospital Mattresses</u></a>	3-4
<a href="#"><u>Mattress Overlays</u></a>	5
<a href="#"><u>Walkers</u></a>	6
<a href="#"><u>Transport Wheelchairs</u></a>	7
<a href="#"><u>Scoters</u></a>	8
<a href="#"><u>Wheelchairs</u></a>	9
<a href="#"><u>Cushions</u></a>	10
<a href="#"><u>Backs Examples for Wheelchairs</u></a>	11
<a href="#"><u>Bathroom Equipment</u></a>	12-13
<a href="#"><u>Small Bathroom Items</u></a>	14-15
<a href="#"><u>Lifts And Transfers</u></a>	16
<a href="#"><u>Slings</u></a>	17
<a href="#"><u>Miscellaneous Equipment</u></a>	18-21

# Hospital Beds



- IVC – Full Electric Hospital Bed with 6 way power and side rails

# Hospital Bed Mattresses



- **Foam Mattress**  
Basic Foam/Solace



- **Low Airloss Mattress**  
Different options; ex. Quartz



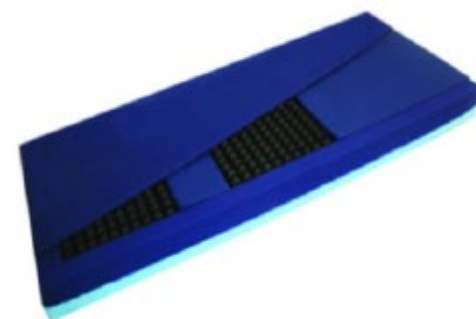
- **Therapeutic Foam Mattress**  
Integraderm 9000 VBR/MP60,  
IVC 4000/6000

# Hospital Mattresses



- Alternating Air Mattress

Example- KCI  
Limited amount



- V4 Mattress



- T-style Mattress

# Mattress Overlays



- 2 inch visco/sensus foam topper



- Repose Mattress Overlay



- ROHO Mattress Section

# Walkers



- 2 Wheeled Walker



- 4 Wheeled Walker (Rollator available) Various Brands

# Transport Wheelchairs



- Fusion Walker/Wheelchair



- Transport Wheelchair

# Scooters



- 3 Wheeled Scooter



- 4 Wheeled Scooter



# Wheelchairs



- Manual Wheelchair



- Tilt Wheelchairs



- Power Wheelchair with Rehab seating and tilt

# Cushions



- Foam Cushion



- Jay Cushion



- Vicair Cushion



- ROHO Cushion

# Back Examples for Wheelchairs



- Invacare Matrix



- Jay Backs



- Future Mobility Backs



- Blake Medical Backs

# Bathroom Equipment



- Sliding Tub Transfer Bench  
Limited amount



- Bath Lift  
Aquatec

# Bathroom Equipment



- Wheeled Commode



- Electric Seat Riser



- Shower Commode



- Tilt shower Commode

# Small Bathroom Items



- Versaframe/Toilet Safety Frame



- Tub Transfer Bench



- Bath Chair  
With or without arms

# Small Bathroom Items



- Tub Grip



- Raised Toilet Seat
  - ❖ With or without arms
  - ❖ 2 – 6 inches high

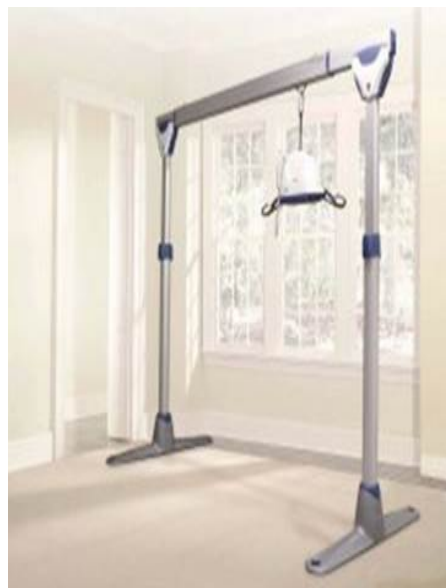


- Stationary Commode

# Lifts And Transfers



- Hoyer Lift



- ARJO Freestanding Lift



- ARJO Tension Mounted Lift



- Sara Sit to Stand Lift



# Slings – S-M-L



- Universal Sling  
(a.k.a. split/ divided leg, U)



- Hammock Sling



- Hygiene Sling

# Miscellaneous Equipment



- Superpole



- Ramp – Up to 10 feet long



- Easy Lift Chair – S-M-L

# Miscellaneous Equipment



- Overbed Table



- Repose Contour Overlay  
for a Lift chair



- Overbed Table For Lift Chair
  - ❖ Left or right side when sitting in chair.

# Miscellaneous Equipment



- Transfer Boards



- Transfer Belts



- Bed Assist Rails

# Miscellaneous Equipment



- Bed Assist Rail



- IV Pole