

# ALS SOCIETY OF BC EQUIPMENT LOAN PROGRAM (ELP)

## Table of Contents

<u>Hospital Beds</u>	2
<u>Hospital Mattresses</u>	3-4
<u>Mattress Overlays</u>	5
<u>Walkers</u>	6
<u>Transport Wheelchairs</u>	7
<u> Scooters</u>	8
<u>Wheelchairs</u>	9
<u>Cushions</u>	10
<u>Back Examples for Wheelchairs</u>	11
<u>Bathroom Equipment</u>	12-13
<u>Small Bathroom Items</u>	14-15
<u>Lifts and Transfers</u>	16
<u>Slings</u>	17
<u>Miscellaneous Equipment</u>	18-21

# Hospital Beds



- IVC – Full Electric Hospital Bed with 6 way power and side rails

# Hospital Bed Mattresses



- Foam Mattress  
Basic Foam/Solace



- Low Airloss Mattress  
Different options;  
Example. Quartz

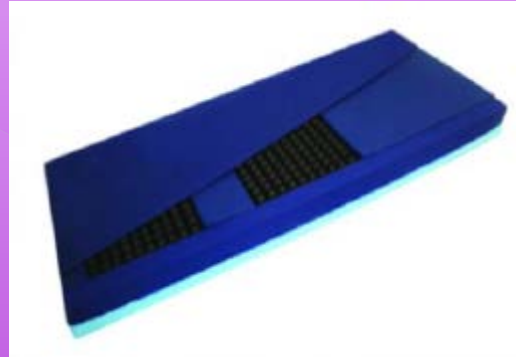


- Therapeutic Foam Mattress  
Integraderm 9000 VBR/MP60,  
IVC 4000/6000

# Hospital Mattresses



- Alternating Air Mattress  
Example- KCI  
With Limited Inventory



- V4 Mattress



- T-style Mattress

# Mattress Overlays



- 2 Inches Visco/Sensus
- Foam Topper



- ROHO Mattress Section

# Walkers



- 2 Wheeled Walker



- 4 Wheeled Walker (Rollator available) Various Brands

# Transport Wheelchairs



- Fusion Walker/Wheelchair



- Transport Wheelchair

# Scooters



- 3 Wheeled Scooter



- 4 Wheeled Scooter



# Wheelchairs



- Manual Wheelchair



- Tilt Wheelchairs



- Power Wheelchair with Rehab seating and tilt

# Cushions



- Foam Cushion



- Gel Cushion



- Air Cushion



- ROHO Cushion

# Back Examples for Wheelchairs



- Invacare Matrix



- Jay Back



- Future Mobility Back



- Blake Medical Back

# Bathroom Equipment



- Sliding Tub Transfer Bench  
With Limited Inventory



- Bath Lift  
Aquatec

# Bathroom Equipment



- Wheeled Commode

- Electric Seat Riser

- Shower Commode

- Tilt shower Commode

# Small Bathroom Items



- Versaframe/Toilet Safety Frame



- Tub Transfer Bench



- Bath Chair  
With or without arms

# Small Bathroom Items



- Tub Grip



- Raised Toilet Seat
  - ❖ With or without arms
  - ❖ 2 – 6 inches high



- Stationary Commode

# Lifts And Transfers



- Hoyer Lift



- ARJO Freestanding Lift



- ARJO Tension Mounted Lift



- Sara Sit to Stand Lift



# Slings – S-M-L



- Universal Sling  
(a.k.a. split/ divided leg, U)



- Hammock Sling



- Hygiene Sling

# Miscellaneous Equipment



- Superpole



- Ramp - Up to 10 feet long



- Easy Lift Chair – S-M-L

# Miscellaneous Equipment



- Overbed Table



- Overbed Table for Lift Chair  
(Left or right side when sitting in chair)

# Miscellaneous Equipment



- Transfer Boards



- Transfer Belts



- Bed Assist Rails

# Miscellaneous Equipment



- Bed Assist Rail



- IV Pole